



CALENDAR 2024

CONTACT INFORMATION

STREETLIGHTS

To report a streetlight outage, please call New York State Electric & Gas (NYSEG) at 800-572-1111 or enter the location of the light at www.nyseg.com

OTHER LISTINGS

BOARD OF ELECTIONS	664-2260
CEATS BUS	734-5211
CHAMBER OF COMMERCE	936-4686
CITY COURT	654-6033
CORNING HOSPITAL	937-7200
DMV	936-7430
GAFFER DISTRICT	937-6292
LIBRARY	936-3713
MEALS-ON-WHEELS	962-7985
OFFICE OF THE AGING	936-4661
SCHOOL DISTRICT	936-3704
SENIOR CENTER	962-8000
SOCIAL SECURITY	1-866-591-3665
STEBEN COUNTY	776-9631
TRANSFER STATION	962-1222
VETERANS SERVICES (Bath)	664-2198
YOUTH CENTER	936-3507

WEBSITE

The City has selected a website as its single platform to provide the public with information via the internet rather than using multiple social media applications. Having a single site provides the public with a "one stop shop" for various items.

www.CityofCorning.com

FOR CITY SERVICES PLEASE CALL 962-0340

If you have questions or complaints about a City service, please feel free call our staff directly at 962-0340. Our staff can answer your questions and schedule service. You may also stop by City Hall or the Public Works Customer Service Center (across the street from Denison Park) during normal business hours.

In addition, the City's website provides a significant amount of information concerning our services, staff contacts, the city calendar, public notices and various service schedules. Our website is located at www.cityofcorning.com

If you are unsure which department to contact, you can call the City Manager's Office and we will be glad to direct you to the right department.

PUBLIC WORKS

381 East Market Street Ext.
962-0340

7:30 AM TO 4:00 PM

Garbage & Recycling	Paving & Potholes
Water & Sewer Problems	Snow Plowing
Grass, Brush, Leaf Collection	

EMERGENCY PHONE LISTINGS

FIRE	911
POLICE	911
AMBULANCE	911
NYSEG	1-800-572-1131
CORNING NATURAL GAS	936-3755

CITY COUNCIL

Mayor	Bill Boland	500 Civic Center Plaza	962-0340	corningmayor@gmail.com
Ward 1	Diane Telehany	500 Civic Center Plaza	962-5883	
Ward 2	Kate Paterson	179 Watauga Ave	769-3133	kep@stny.rr.com
Ward 3	Jeff Clark	14 East Fourth Street	937-0794	jeffclarkforcorning@gmail.com
Ward 4	Marshall Hyde	271 W Second St	542-9313	Hydeforcitycouncil@gmail.com
Ward 5	Frank Muccini	31 Earl St	962-7206	fmuccini2@stny.rr.com
Ward 6	Betty Coccho	14 Maple St	962-3637	bettycoccho@gmail.com
Ward 7	Mark ReSue	500 Civic Center Plaza	769-3333	mresue7thward@yahoo.com
Ward 8	Alison Hunt	149 Cutler Ave	438-2701	alisonhunt@outlook.com

SNOW REMOVAL

The City of Corning prioritizes its plowing operations depending on weather conditions and resources available. In general, we plow priority routes first followed by secondary streets. In most cases, alleys and parking lots are plowed last. We ask for the public's patience, as snow fall rates and limited resources can limit our abilities to rapidly clear snow and ice.

Priority Streets

The following streets shall be designated as priority routes:

Zone 1: Chemung Street, Cedar Street, Delevan Avenue, Crestwood Road, Upland Drive, Steuben Street, Pearl Street, East First Street, Denison Parkway East, Park Avenue.

Zone 2: Walnut Street, Pine Street, State Street, West First Street, West Second Street, West Third Street, West Fourth Street, Lexington Street, Fox Street, Field Street, Sunset Drive, Denison Parkway West.

Zone 3: Corning Boulevard, Brisco Bridge, Bridge Street Bridge, Centerway, Baker Street, Dodge Avenue, East Pulteney Street, Bridge Street.

Zone 4: Winfield Street, Kingsbury Avenue Ext., Reynolds Avenue, Spruce Street, West Pulteney Street.

Communications

During plowing operations, updates may be provided through the media and the City's website (www.CityofCorning.com). Police dispatchers do not coordinate plow operations and do not have additional information concerning the operational status of plowing.

Parking

It is important motorists adhere to the City's parking regulations for safe and efficient snow removal operations. In addition, during snow events, please park vehicles in your driveways not on the street to help our plow operators clean streets more quickly. Illegally parked vehicles may be subject to ticketing and towing.

Gaffer District Sidewalks

Property owners in the Gaffer District are responsible for clearing snow and ice from their sidewalks. The Corning Intown District Management Association (CIDMA) assists property owners by plowing a single blade width along business district sidewalks where possible. CIDMA also periodically assists property owners by removing snow piles from sidewalks.

If CIDMA decides to remove snow piles, a contractor is hired by CIDMA to push piles into the roadway and coordinates with the City to haul the snow away by City crews. The decision to remove snow piles and the timing of these operations is subject to weather and resource availability.

GARBAGE COLLECTION & RECYCLING

The City of Corning sells garbage bags to finance garbage collection. With this system, you only pay for what you dispose, making the cost of garbage disposal fair for everyone. Collection under the pay-per-bag system was instituted on August 19, 1991.

BAGS & COST: The bags sold by the City are blue in color. Two sizes of bags are available: (Prices are subject to change)

30 gallon Price: \$2.25

15 gallon price: \$1.75

WHERE TO PURCHASE BAGS: The bags are available at the following locations (Locations are subject to change):

City Hall (Finance Office)	Corning Building Company
Senior Center	Rite Aid, Conhocton St.
Gerould's Pharmacy	Wegmans
TOPS	

SET-OUT RULES:

1. Only official City of Corning garbage bags will be collected. No other bag or container will be collected.
2. Garbage must be set out at the curb (side yard, rear yard, and alley pick up has been eliminated except in commercial areas). Garbage shall be set out no earlier than 2 PM the day before and not later than 6 AM the day of collection and cans returned to the premises no later than 9 PM of the day of collection. Bags Can Be Left in Garbage Can. Use of cans is encouraged.
3. All solid waste materials (except for yard waste - leaves, grass, clippings, etc.) shall be placed in the City disposal bag. No material outside of the bags (except the recyclables) will be collected.
4. The weight limit per bag is 40 lbs.
5. Syringe Needles (sharps) (used for injections) are prohibited for disposal in City Garbage bags (Dispose of sharps needles in proper Container) and any human waste.
6. If garbage is not put out on time, garbage may be brought to the City Maintenance Garage on Woodview Ave on any scheduled pickup day between 7:00 AM and 11:00 AM. (Place your full blue bags in the designated box.)

RECYCLING

To have the City pick up your recyclable material, it must be placed alongside (in conjunction with) a City issued Blue Garbage Bag(s). Recyclables will only be collected from residents that use the City's Blue Bag System. (The blue bag fees also fund the recycling program.) Recyclables must be in a collection container and not left in paper or plastic bags.

CARDBOARD

Acceptable: Clean, corrugated cardboard.

How to prepare: Must be bundled. Use string or twine to bundle. Dimensions not to exceed 30". Must be kept dry.

Not acceptable: Cardboard with waxy surfaces, and pizza boxes.

Limit: Two bundles (30" wide X 20" long X 6" high) at one time.

FOOD CANS

Acceptable: All food cans, including pet food cans.

How to prepare: Clean off food. Flatten cans. Labels do not need to be removed.

Not acceptable: Aluminum beverage, aerosol, paint or fuel cans.

Limit: Two 5-gallon containers at one time.

PLASTIC

Acceptable: #1 and #2 containers (must be separated).

How to Prepare: Rinse well. Leave lids on. Labels do not need to be removed. Crush plastic containers.

Not acceptable: Wide mouth plastic food containers (e.g. cottage cheese, yogurt, dip, medicine bottles)

Limit: 25 assorted #1 & #2 plastics at one time.

MIXED PAPER

Acceptable: Newspaper, magazines, glossies, catalogues, telephone books, junk mail, white and colored paper, and envelopes.

How to prepare: Stack no more than 12" high. Use string or twine to bundle. Must be kept dry.

Not Acceptable: Paper or plastic bags.

GLASS

Acceptable: Clear, green and amber glass. Jars and Bottles.

How to prepare: Clean. Remove and discard metal rings and lids. Labels do not need to be removed.

Not Acceptable: Pyrex, window glass, ceramics, light bulbs, auto glass.

Limit: Two 5-gallon containers at one time. bundles at one time.

January 2024						
SUNDAY	MONDAY	TUESDAY	WEDNESDAY	THURSDAY	FRIDAY	SATURDAY
Christmas Tree pickup begins Dec 27, 2023, and ends Jan 27, 2024.	1 New Year's Day Observed City Hall Closed	2 Garbage Zone 1 Planning Commission Meeting 5:00 PM Council Meeting 6:30 PM	3 Garbage Zone 2	4 Garbage Zone 3	5 Garbage Zone 4	6
	7	8 Garbage/Recycling Zone 1 Loan Review 2:00 PM Design Review 3:30 PM Historic Preservation 5:00 PM	9 Garbage/Recycling Zone 2	10 Garbage/Recycling Zone 3	11 Garbage/Recycling Zone 4	12
14	15 Garbage Zone 1	16 Garbage Zone 2	17 Garbage Zone 3	18 Garbage Zone 4	19	20
21	22 Garbage/Recycling Zone 1	23 Garbage/Recycling Zone 2 Zoning Board Appeals 5:00 PM	24 Garbage/Recycling Zone 3	25 Garbage/Recycling Zone 4	26	27
28	29 Garbage Zone 1	30 Garbage Zone 2	31 Garbage Zone 3			For questions about City services, please call 607-962-0340

POLICE & PARKING

POLICE DEPARTMENT

911 (Emergency)

962-0340 (Non-Emergency)

The Police Department is committed to providing professional law enforcement. The Department also administers Parking Enforcement and School Crossing Guards.

In addition to performing basic law enforcement functions, the Department also provides several other community services:

- Parking Enforcement
- School Crossing Guards
- Drug Tip Hotline- 1-844-378-4847 or www.844drugtip.com
- Bicycle Patrol
- Downtown Walking Patrol
- Bicycle Safety and Registration Program
- Child Safety Seat Inspections
- Station Tours
- Neighborhood Watch Information and Support
- Dog Control

DOG CONTROL

Dog Control Officer.....607-463-0326

(If no answer, call the Department Directly at the number above.)

1. No dog shall be permitted to run at large within the city.
2. It is unlawful to keep any dog within the corporate limits of the City that by barking, howling, or making any other noise causes any disturbance or creates any nuisance.
3. It shall be the duty of the dog owner, or person in charge of the dog to remove any waste left by such dog on any sidewalk, street or other public property of the City of Corning or on the private property of another person.
4. Rabies vaccinations are required.
5. Dog license is required in the city for any dog 4 months of age or older.

ALTERNATE SIDE STREET PARKING

The purpose of alternate side street parking is to encourage the efficient flow of traffic for law enforcement, firefighting, and emergency medical services, as well as to improve efficiency for snow plowing, salting, street sweeping, leaf collection, garbage/recycling collection, underground utility work, and street maintenance.

Instead of posting every street, which would be costly and may be unsightly, the City uses an areawide posting by installing regulatory signs at the entrances to the city.

The City's alternate side street parking regulations are as follows, unless otherwise posted on the street:

EVEN SIDE OF THE STREET

No Parking 12:01 am - 4:00 pm on Monday, Wednesday, Friday, Sunday

ODD SIDE OF THE STREET

No Parking 12:01 am - 4:00 pm on Tuesday, Thursday, Saturday

LANE/ALLEY PARKING

There is No Parking in all lanes and alleys within the city.

ZONE PARKING

Certain areas of the City's downtown use a Zone Parking to ensure adequate turn-over of parking spaces. These areas allow for a 2-hour maximum limit of parking per zone per day. There is No Parking in these zones from 2:00 am to 6:00 am.

PERMIT PARKING

Limited Permit Parking spaces are available for some City lots. These may be purchased at the Finance Office on an annual basis. The City sells these permits on a "first come, first serve" basis, with current property owners being able to renew their permits approximately 2 weeks before general release at the end of December.

February 2024

SUNDAY	MONDAY	TUESDAY	WEDNESDAY	THURSDAY	FRIDAY	SATURDAY
<p>For questions about City services, please call 607-962-0340</p>				1 Garbage Zone 4	2	3
4	<p>5 Garbage/Recycling Zone 1</p> <p>Council Meeting 6:30 PM</p>	<p>6 Garbage/Recycling Zone 2</p> <p>Planning Commission Meeting 5:00 PM</p>	7 Garbage/Recycling Zone 3	8 Garbage/Recycling Zone 4	9	10
11	<p>12 Garbage Zone 1</p> <p>Loan Review 2:00 PM Design Review 3:30 PM Historic Preservation 5:00 PM</p>	13 Garbage Zone 2	14 Garbage Zone 3	15 Garbage Zone 4	16	17
18	<p>19</p> <p>President's Day City Hall Closed</p>	20 Garbage/Recycling Zone 1	21 Garbage/Recycling Zone 2	22 Garbage/Recycling Zone 3	23 Garbage/Recycling Zone 4	24
25	26 Garbage Zone 1	<p>27 Garbage Zone 2</p> <p>Zoning Board Appeals 5:00 PM</p>	28 Garbage Zone 3	29 Garbage Zone 4		

ADMINISTRATION

FINANCE

**Monday through Friday
8:30 am to 4:00 pm**

The Finance Office is responsible for maintaining the City's financial accounts according to State specifications and generally accepted accounting principles, to control and disburse funds as appropriated, and to receive, deposit and account for all City revenues. In order to ensure City funds are safeguarded and available when needed, the Finance Office maintains systems of internal control and cash management. In addition, the Finance Office is responsible for the preparation of the annual financial report, as well as providing all necessary data and analysis for the preparation of the City's annual budget.

The following can be paid at the Finance Office:

- Current City Property Taxes
- Current County Property Taxes
- Water & Sewer Bills
- City Garbage Bags
- Parking Permits
- Parking Tickets

An ATM is available at City Hall.

The Finance Office levies City taxes on July 1. Penalties are added for payments received after July 31.

The County taxes are levied on January 1. Penalties are added for payments received after January 31.

CITY CLERK

**Monday through Friday
8:30 am to 4:00 pm**

The City Clerk's Office provides a variety of services including:

- CEATS Bus Passes (Monthly Unlimited)
- County Voter Registration Form
- FOIL Processing
- Genealogy Information Service
- Notary Public Service
- Peddler/Vending Licenses
- Physically Challenged Parking Permits
- Records Access
- Sporting Licenses
- Taxi Licenses
- Birth Certificates
- Death Certificates
- Marriage Licenses
- Dog Licenses

www.CityofCorning.com

ASSESSOR

**Monday through Friday
8:30 am to 4:00 pm**

MARCH 1	Exemption filing deadline
MARCH 1	Taxable Status Date
APRIL 1	Tentative Assessment Roll Filing Date
MAY	First Tuesday of May is Grievance Day
JUNE 1	Final Assessment Roll Filing Date

A property owner with an assessment complaint can meet with the Assessor prior to April 1 of the year for an informal review. After the tentative assessment roll is filed on April 1, property owners must file a formal complaint with the Board of Assessment Review before the first Tuesday in May.

Please contact the Assessor's Office to determine if you are eligible for a property tax exemption. The most common exemptions are the local senior exemption for 65 years or older owners who meet certain income criteria, and the Veterans' exemption for veterans or their un-remarried surviving spouses who served in the military.

The STAR basic Program provides school tax relief to owner-occupied residences, without regard to age. The STAR enhanced program provides additional school tax relief to seniors that meet certain income criteria. New owners may file for STAR Credit with NYS@www.tax.ny.gov. The deadline for all exemptions is March 1.

March 2024

SUNDAY	MONDAY	TUESDAY	WEDNESDAY	THURSDAY	FRIDAY	SATURDAY
<p>For questions about City services, please call 607-962-0340</p>					1	2
3	<p>4 Garbage/Recycling Zone 1</p> <p>Council Meeting 6:30 PM</p>	<p>5 Garbage/Recycling Zone 2</p> <p>Planning Commission Meeting 5:00 PM</p>	6 Garbage/Recycling Zone 3	7 Garbage/Recycling Zone 4	8	9
<p>10</p> <p>Daylight Savings Time Begins</p>	<p>11 Garbage Zone 1</p> <p>Loan Review 2:00 PM Design Review 3:30 PM Historic Preservation 5:00 PM</p>	12 Garbage Zone 2	13 Garbage Zone 3	14 Garbage Zone 4	15	16
17	18 Garbage/Recycling Zone 1	19 Garbage/Recycling Zone 2	20 Garbage/Recycling Zone 3	21 Garbage/Recycling Zone 4	22	23
<p>24</p> <p>31</p>	25 Garbage Zone 1	<p>26 Garbage Zone 2</p> <p>Zoning Board Appeals 5:00 PM</p>	27 Garbage Zone 3	28 Garbage Zone 4	<p>29</p> <p>Good Friday City Hall Closed</p>	30

PUBLIC WORKS LAWN & BRUSH COLLECTION RULES

BRUSH COLLECTIONS

BRUSH: Shall include trees, tree limbs, hedges, hedge clippings, and bushes.

SIZE LIMITATIONS: Length - 10 feet maximum. Diameter - 1 inch to 8-inch maximum. Pile size - 10 feet long x 4 feet high x 5 feet wide maximum

BRUSH LESS THAN 1 INCH DIAMETER: Shall be bundled with rope or twine (wire will not be accepted). Maximum length shall not exceed 3 feet and maximum diameter of the bundle shall not exceed 18 inches. No more than 10 bundles meeting the above size limitations will be collected at one time. Any brush containing thorny material must be bundled as stated above.

CONTAINERS: Brush shall be set out for collection in its natural state and in the limitations as stated above. Boxes can be used for containers for brush. **PLASTIC AND PAPER BAGS ARE PROHIBITED.**

COLLECTION POINTS: Brush shall be set out at the front of the property (curbside) for collection. Properties fronting on alleys will be picked up on the alley upon request to the Department of Public Works.

PROHIBITED MATERIALS: Garbage and trash as defined below, flammable or explosive substances, paint thinners, or solvents, pesticides, acids, caustics or similar wastes, feces, ashes, furniture, appliances, stones, dirt, lumber and building materials, wire, and nails.

GARBAGE: Shall include every waste accumulation of meat, vegetable, or similar organic matter that attends the preparation, use, cooking, or storage of meat, fish, fowl, fruit or vegetable and also includes tin cans, glass, paper cartons, or other cartons that have contained food materials.

TRASH: Shall include discarded paper, rubber, cloth, leather, as well as inorganic waste such as glass, porcelain, plastics, tin cans, metal or other similar matter.

SCHEDULE: Brush Collection will be scheduled once every other week from April to the end of September according to the following areas or routes:

ZONE 1	MONDAY	East of Pine Street to City line.
ZONE 2	TUESDAY	West of Pine Street to City line.
ZONE 3	WEDNESDAY	East of Dodge Avenue to City line below RR tracks
ZONE 4	THURSDAY	West of Dodge Avenue to City line and all areas above RR tracks.

LAWN PICKUP

CONTAINERS: Leaves or grass must be in containers (i.e. cans or boxes). Containers will be emptied and left at curbside. **NOTE:** Plastic bags and paper bags are prohibited during the summer pickup.

WEIGHT LIMIT: Thirty (30) pounds maximum per container.

Brush shall be separated and will continue to be collected as per regular schedule and rules for collection. Properties fronting alleys will be collected upon request. Leaves and grass are to be at curbside on day of collection.

The Department of Public Works reserves the right to change the schedule from time to time as the need may arise. All efforts to maintain this schedule will be made, barring any unforeseen emergencies or inclement weather conditions.

NOTE: When mowing your lawn, please do not blow the grass clippings into the street. Grass clippings clog the storm grates and lines.

City residents may dispose of organic yard waste (leaves, grass, brush, etc.) at the City's yard waste site during public hours. The site is generally open on Saturdays from 10:00 am to 2:00 pm in the spring and fall for a limited period. Actual dates and hours will be released to the media and posted on the city's website a week or two prior to opening

The City's site is located off High Street Extension. Take 414 towards Watkins Glen, turn right, across from Winfield Street, then turn left off High Street Extension. Proof of residency is required.

April 2024

SUNDAY	MONDAY	TUESDAY	WEDNESDAY	THURSDAY	FRIDAY	SATURDAY
<p>Tentative Assessment Roll Filed April 1 -May 3 Submit Form RP524 to Assessor and Schedule Formal Review</p>	<p>1 Garbage/Recycling Zone 1</p> <p>Council Meeting 6:30 PM</p>	<p>2 Garbage/Recycling Zone 2</p> <p>Planning Commission Meeting 5:00 pm</p>	<p>3 Garbage/Recycling Zone 3</p>	<p>4 Garbage/Recycling Zone 4</p>	<p>5</p>	<p>6</p>
<p>7</p>	<p>8 Garbage Zone 1</p> <p>Brush & Lawn pickup Southside east of Pine Street</p> <p>Loan Review 2:00 PM</p> <p>Design Review 3:30 PM</p> <p>Historic Preservation 5:00 PM</p>	<p>9 Garbage Zone 2</p> <p>Brush & Lawn pickup Southside west of Pine Street</p>	<p>10 Garbage Zone 3</p> <p>Brush & Lawn pickup Northside east of Dodge below the RR tracks</p>	<p>11 Garbage Zone 4</p> <p>Brush & Lawn pickup Northside west of Dodge & areas above the RR tracks</p>	<p>12</p>	<p>13</p>
<p>14</p>	<p>15 Garbage/Recycling Zone 1</p>	<p>16 Garbage/Recycling Zone 2</p>	<p>17 Garbage/Recycling Zone 3</p>	<p>18 Garbage/Recycling Zone 4</p>	<p>19</p>	<p>20</p>
<p>21</p>	<p>22 Garbage Zone 1</p> <p>Brush & Lawn pickup Southside east of Pine Street</p>	<p>23 Garbage Zone 2</p> <p>Brush & Lawn pickup Southside west of Pine Street</p> <p>Zoning Board Appeals 5:00 PM</p>	<p>24 Garbage Zone 3</p> <p>Brush & Lawn pickup Northside east of Dodge below the RR tracks</p>	<p>25 Garbage Zone 4</p> <p>Brush & Lawn pickup Northside west of Dodge & areas above the RR tracks</p>	<p>26</p>	<p>27</p> <p>Yard Waste Site (Rt. 414) 10:00 am-2:00pm</p>
<p>28</p>	<p>29 Garbage/Recycling Zone 1</p>	<p>30 Garbage/Recycling Zone 2</p>			<p>Lawn Pickup (brush, leaves, clippings will begin April 8)</p>	<p>For questions about City services, please call 607-962-0340</p>

CODE ENFORCEMENT

CODE ENFORCEMENT

Monday through Friday
8:00 am to 4:00 pm

The Code Enforcement Office enforces the NY Uniform Fire Prevention and Building Code for new construction and existing buildings to ensure compliance and proper maintenance.

Most construction requires a building permit from Code Enforcement. Some examples of projects needing a permit are: swimming pools, fences, sheds, decks, and most home repair and/or upgrades such as siding and roofing projects. Permits may be required for other projects as well. Check with Code Enforcement for details before beginning any project in order to avoid additional fees and/or fines.

The Code Enforcement Office is responsible for Code Violations (i.e., high grass, garbage, unsafe buildings). The office also issues Plumbing Permits (inside). For outside Water, Sanitary Sewer, and Storm Sewer Permits, see the Department of Public Works.

TIPS FOR CHOOSING A CONTRACTOR

Whether you plan to build, remodel or add-on, you may require the services of a contractor, regardless of project cost.

RESEARCH YOUR PROJECT

Your research should include what has to be done, the best ways to do the work, and the types/costs of needed materials. Ask friends, building supply stores and the Code Enforcement Office before you make final decisions.

GET THE NAMES OF SEVERAL CONTRACTORS

Start with friends and neighbors who had similar work done. Building supply stores deal with local contractors and may be able to get you started with some names.

GET ESTIMATES

Ask at least three contractors to estimate the cost of your project. This is normally a free service and helps you prepare for negotiating a final contract. Make sure the estimates detail the scope of the work, the types of materials, the total project cost. If you are borrowing money, discuss the estimate with the lender.

COMPARE THE ESTIMATES

Once you receive estimates, carefully compare them. Be sure they include everything you want. If an estimate contains unwanted or unneeded items, keep these in mind for possible negotiations with the contractor. The lowest estimate is not always the best. Remember to ask questions about anything you do not understand.

BEWARE OF CON ARTISTS

Contractors do not normally solicit work door-to-door. Here are some things to look out for:

- Arrival in an unmarked truck or van.
- A "contractor" claiming they did a job nearby and have some material left, so they are offering you a discount.
- A post office address with no street address or a phone number that is just an answering service.
- High pressure sales tactics.

- Refusal to give a written estimate, contract, or local references.

SIGNING A CONTRACT

Once you've agreed on a contractor, get the estimate in writing and in explicit detail. It should include:

- An exact description of all of the work.
- A list of the materials to be used.
- The total dollar amount of the contract and a payment schedule. Be cautious about a contractor who demands a large payment up front. Contractors are accustomed to pay-as-you go schedules or waiting until the job is done.
- Any promises made by the contractor.
- Who will be responsible for getting the necessary building permit?
- The starting and completion dates.
- Any warranty (for example, a Home Owners Warranty) and a clause which allows you to withhold final payment until sometime after the job's completion to allow you time to inspect the work. If there are any problems, this can serve as an incentive for the contractor to fix them.
- Cleanup. This item should be considered especially if a large amount of debris will be generated.
- Insurance. When the contractor calls his insurance agent, they will send an insurance certificate with their name and address for each job prior to signing contract.
- The contractor's and your signatures.

May 2024

SUNDAY	MONDAY	TUESDAY	WEDNESDAY	THURSDAY	FRIDAY	SATURDAY
<p>Formal Property Assessment Review Grievance Day May 7</p>			<p>1 Garbage/Recycling Zone 3</p>	<p>2 Garbage/Recycling Zone 4</p>	<p>3</p>	<p>4</p> <p>Yard Waste Site (Rt. 414) 10:00 am-2:00pm</p>
<p>5</p>	<p>6 Garbage Zone 1 Council Meeting 6:30PM Brush & Lawn Pickup Southside east of Pine Street</p>	<p>7 Garbage Zone 2 Planning Commission Meeting 5:00PM Brush & Lawn Pickup Southside west of Pine Street</p>	<p>8 Garbage Zone 3 Brush & Lawn pickup Northside east of Dodge below the RR tracks</p>	<p>9 Garbage Zone 4 Brush & Lawn pickup Northside west of Dodge & areas above RR tracks</p>	<p>10</p>	<p>11</p> <p>Yard Waste Site (Rt. 414) 10:00 am-2:00pm</p>
<p>12</p>	<p>13 Garbage/Recycling Zone 1 Loan Review 2:00 PM Design Review 3:30 PM Historic Preservation 5:00 PM</p>	<p>14 Garbage/Recycling Zone 2</p>	<p>15 Garbage/Recycling Zone 3</p>	<p>16 Garbage/Recycling Zone 4</p>	<p>17</p>	<p>18</p> <p>Yard Waste Site (Rt. 414) 10:00 am-2:00pm</p>
<p>19</p>	<p>20 Garbage Zone 1 Brush & Lawn Pickup Southside east of Pine Street</p>	<p>21 Garbage Zone 2 Brush & Lawn Pickup Southside west of Pine Street</p>	<p>22 Garbage Zone 3 Brush & Lawn pickup Northside east of Dodge below the RR tracks</p>	<p>23 Garbage Zone 4 Brush & Lawn pickup Northside west of Dodge & areas above RR tracks</p>	<p>24</p>	<p>25</p> <p>Yard Waste Site (Rt. 414) 10:00 am-2:00pm</p>
<p>26</p>	<p>27 Memorial Day Observed City Hall Closed</p>	<p>28 Garbage/Recycling Zone 1 Zoning Board Appeals 5:00 PM</p>	<p>29 Garbage/Recycling Zone 2</p>	<p>30 Garbage/Recycling Zone 3</p>	<p>31 Garbage/Recycling Zone</p>	<p>PLEASE OBTAIN NECESSARY PERMITS BEFORE BEGINNING YOUR PROJECT</p>

FIRE DEPARTMENT, PARKS, SENIOR CENTER

FIRE DEPARTMENT 911 (Emergency) 962-0340 (Non-Emergency)

The Fire Department is staffed 24 hours a day, 365 days a year. In addition to fire suppression we provide the following services:

Fire Investigation Unit

In 1985, the Fire Department officially organized the Fire Investigation Unit, with its primary responsibility being to determine the cause and origin of all fires occurring in the City.

Public Education

Fire safety and prevention programs are offered regularly to employees of businesses and institutions. Programs are presented both on-site and at Fire Department facilities. School safety programs are tailored appropriate age groups and are designed to follow students through their education. The Fire Department has a Fire Related Youth Program to work with children who have been involved in the cause of fire. Often, the program deals with issues involving fire play and a child's curiosity with fire.

On-Scene Basic Life Support

The Fire Department is a Certified First Responder Unit and is trained and equipped to provide on-scene basic life support. All personnel are certified by the State of New York as Emergency Medical Technicians or certified First Responders.

Commercial Building Inspections

The Fire Department assists the Code Enforcement Office with inspections of commercial buildings.

Special Operations

The Fire Department also responds to many non-fire related emergencies such as: vehicle accident victim extrication; water rescue; hazardous materials accidents; confined space rescue; rope rescue; and carbon monoxide emergencies.

PARKS & RECREATION DEPARTMENT

The City of Corning has a variety of facilities and programs to meet your recreational needs. We have two outdoor swimming pools, an ice rink, and seven City parks. Stewart and Denison Pools operate mid-June through late August. The Ice Rink offers public skating and ice hockey from mid-November through the middle of March.

Our seven City parks are Denison, Stewart, William Street, Hillvue, Houghton, Canfield and McKinney. Each park offers varied recreational opportunities such as playgrounds, ballfields, picnic areas, pavilions, and skate park. Pavilions & ballfields can be reserved by filing a reservation request and paying a per day fee at the main office. (The City does not own Riverfront Centennial Park or Fallbrook Park. Questions concerning reservations at these parks should be addressed by calling the Gaffer District at 937-6292.)

In addition, the City offers a multitude of youth and adult sports leagues and camps, a Summer Parks Recreation Program, tot programs, Arts and Crafts programs, and community special events such as Kid's Day and Halloween activities.

SENIOR CENTER

Since 1982, the City of Corning has operated and maintained a Senior Citizens Center for enjoyment of the area's population that are over 55 years of age; and provides meals for those over 60 years of age. Some of the activities include:

Photography	Tax Counseling
Exercise Classes	Tai Chi
Sewing Lessons	Nutrition Program
Painting Class	Marquetry
Performing Groups	Senior Clubs
Ceramics Class	Defensive Driving
Dancing	Card Playing
Bingo	Garden Club
Pool (Billiards)	Bus Trips
Blood Pressure Screening	
Health Related Programs	
Foreign Language Class	

The Center also serves as location for the Retired and Senior Volunteer Program (RSVP) and the satellite office for Office for Aging and Catholic Charities.

If you are over the age of 55 and are interested in our programs, please stop by the Senior Center located at One Park Lane, or call (607) 962-8000.

The Senior Center sells City of Corning garbage bags.

June 2024						
SUNDAY	MONDAY	TUESDAY	WEDNESDAY	THURSDAY	FRIDAY	SATURDAY
<p>For questions about City services, please call 607-962-0340</p>			<p>PLEASE OBSERVE ALTERNATE SIDE-OF-STREET PARKING REGULATIONS</p>			<p>1</p> <p>Yard Waste Site (Rt. 414) 10:00 am-2:00pm</p>
2	<p>3 Garbage Zone 1</p> <p>Council Meeting 6:30PM Brush & Lawn Pickup Southside east of Pine Street</p>	<p>4 Garbage Zone 2</p> <p>Planning Commission Meeting 5:00PM Brush & Lawn Pickup Southside west of Pine Street</p>	<p>5 Garbage Zone 3</p> <p>Brush & Lawn pickup Northside east of Dodge below the RR tracks</p>	<p>6 Garbage Zone 4</p> <p>Brush & Lawn pickup Northside west of Dodge & areas above RR tracks</p>	7	<p>8</p> <p>Yard Waste Site (Rt. 414) 10:00 am-2:00pm</p>
9	<p>10 Garbage/Recycling Zone 1</p> <p>Loan Review 2:00 PM Design Review 3:30 PM Historic Preservation 5:00 PM</p>	<p>11 Garbage/Recycling Zone 2</p>	<p>12 Garbage/Recycling Zone 3</p>	<p>13 Garbage/Recycling Zone 4</p>	14	<p>15</p> <p>Yard Waste Site (Rt. 414) 10:00 am-2:00pm</p>
16	<p>17 Garbage Zone 1</p> <p>Brush & Lawn Pickup Southside east of Pine Street</p>	<p>18 Garbage Zone 2</p> <p>Brush & Lawn Pickup Southside west of Pine Street</p>	<p>19 Garbage Zone 3</p> <p>Brush & Lawn pickup Northside east of Dodge below the RR tracks</p>	<p>20 Garbage Zone 4</p> <p>Brush & Lawn pickup Northside west of Dodge & areas above RR tracks</p>	21	22
<p>23</p> <p style="text-align: center;">30</p>	<p>24 Garbage/Recycling Zone 1</p>	<p>25 Garbage/Recycling Zone 2</p> <p>Zoning Board Appeals 5:00 PM</p>	<p>26 Garbage/Recycling Zone 3</p>	<p>27 Garbage/Recycling Zone 4</p>	28	<p>29</p> <p>Last day of Yard Waste Site (Rt. 414) 10:00 am-2:00pm</p>

WHAT TO DO IN AN EMERGENCY

Power Failures

- Keep flashlights, a battery-operated radio and fresh batteries on hand.
- Keep gas tanks at least half full; gas stations use electricity to pump fuel.
- Avoid opening the refrigerator and freezer doors. Food stays fresh for up to four hours after the power goes off.
- Turn off computers, televisions and appliances you were using when the power went off.
- Protect your computer with a surge protector.
- If you use a portable generator, operate it outside, never indoors. The generator should be directly connected to lights and appliances. Generators supplying a panel box should be connected by an electrician.

In the Winter

- Dress warm to avoid hypothermia.
- Don't heat the house with a gas range.
- If you use an alternate heating source such as a kerosene heater, be sure to provide adequate ventilation, otherwise carbon monoxide poisoning could occur. Place the heater a safe distance from combustibles.
- Let water trickle from faucets to avoid frozen pipes. Never thaw pipes with a torch.

Prepare a Disaster Supply Kit in Advance

- At least one gallon of water for each person per day for at least three days for drinking and sanitation.
- At least a three-day supply of non-perishable food for each household member. Replace food and water every six months. This includes food for infants and special diets.
- Battery-powered or hand crank radio and a NOAA Weather Radio with tone alert and extra batteries for both.
- Flashlight and extra batteries.
- Always keep a few extra days' worth of necessary prescription medications on hand.
- Plan on how you would communicate with different family members in various disaster situations and create a plan.

Learn Some Safety Skills

- Get trained in first aid and CPR
- Learn how to use a fire extinguisher.

**IF YOU NEED HELP
DIAL 911**

Emergency Communications

- Listen for emergency broadcasts and to local media outlets for public safety instructions and information.
- The primary outlets for official information are local radio and television stations which are part of the Emergency Alert System.
- Evacuation route information will be broadcast through these local media outlets.

Special Needs

- More planning is often needed for infants, the elderly, and persons with disabilities.
- Make plans now on what to do with your pet in the event you have to leave your home. Other than service animals. Pets are not permitted in public shelters.

July 2024

SUNDAY	MONDAY	TUESDAY	WEDNESDAY	THURSDAY	FRIDAY	SATURDAY
<p>For questions about City services, please call 607-962-0340</p>	<p>1 Garbage Zone 1 Council Meeting 6:30PM Brush & Lawn Pickup Southside east of Pine Street</p>	<p>2 Garbage Zone 2 Planning Commission Meeting 5:00PM Brush & Lawn Pickup Southside west of Pine Street</p>	<p>3 Garbage Zone 3 Brush & Lawn pickup Northside east of Dodge below the RR tracks</p>	<p>4 4TH OF JULY OBSERVED City Hall Closed</p>	<p>5 Garbage Zone 4 Brush & Lawn pickup Northside west of Dodge & areas above RR tracks</p>	<p>6</p>
<p>7</p>	<p>8 Garbage/Recycling Zone 1 Loan Review 2:00 PM Design Review 3:30 PM Historic Preservation 5:00 PM</p>	<p>9 Garbage/Recycling Zone 2</p>	<p>10 Garbage/Recycling Zone 3</p>	<p>11 Garbage/Recycling Zone 4</p>	<p>12</p>	<p>13</p>
<p>14</p>	<p>15 Garbage Zone 1 Brush & Lawn Pickup Southside east of Pine Street</p>	<p>16 Garbage Zone 2 Brush & Lawn Pickup Southside west of Pine Street</p>	<p>17 Garbage Zone 3 Brush & Lawn pickup Northside east of Dodge below the RR tracks</p>	<p>18 Garbage Zone 4 Brush & Lawn pickup Northside west of Dodge & areas above RR tracks</p>	<p>19</p>	<p>20</p>
<p>21</p>	<p>22 Garbage/Recycling Zone 1</p>	<p>23 Garbage/Recycling Zone 2 Zoning Board Appeals 5:00 PM</p>	<p>24 Garbage/Recycling Zone 3</p>	<p>25 Garbage/Recycling Zone 4</p>	<p>26</p>	<p>27</p>
<p>28</p>	<p>29 Garbage Zone 1 Brush & Lawn Pickup Southside east of Pine Street</p>	<p>30 Garbage Zone 2 Brush & Lawn Pickup Southside west of Pine Street</p>	<p>31 Garbage Zone 3 Brush & Lawn pickup Northside east of Dodge below the RR tracks</p>			

WATER DEPARTMENT

FACTS AND FIGURES

In addition to the people who work and visit our community, our water system serves over 11,100 full time residents (approximately 4,300 service connections). The total water produced in 2018 was 398 million gallons.

ARE THERE CONTAMINANTS IN OUR DRINKING WATER?

As the State regulations require, we routinely test your drinking water for numerous contaminants. These contaminants include: total coliform, inorganic compounds, nitrate, nitrite, lead and copper, volatile organic compounds, and synthetic organic compounds. In 2018, we tested for more than 140 contaminants. The tests done on the City drinking water shows that some contaminants were detected; however, these contaminants were detected well below New York State Requirements. The State allows us to test for some contaminants less than once per year because the concentrations of these contaminants do not change frequently.

It should be noted that all drinking water, including bottled drinking water, may be reasonably expected to contain at least small amounts of some contaminants. The presence of contaminants does not necessarily indicate that water poses a health risk.

TREATMENT

The City of Corning provides the following treatment to its water supply:

Chlorination for disinfection

Air stripping for removal of TCE

Addition of poly-phosphate for the purpose of sequestering calcium and iron

CONSERVATION TIPS

- Automatic dishwashers use 15 gallons for every cycle, regardless of how many dishes are loaded. So get a run for your money and load it to capacity.
- Turn off the tap when brushing your teeth.
- Check every faucet in your home for leaks. Just a slow drip can waste 15 to 20 gallons a day. Fix it up and you can save almost 6,000 gallons per year.
- Check your toilets for leaks by putting a few drops of food coloring in the tank, watch for a few minutes to see if the color shows up in the bowl. It is not uncommon to lose up to 100 gallons a day from one of these otherwise invisible toilet leaks. Fix it and you save more than 30,000 gallons a year.
- Use your water meter to detect hidden leaks. Simply turn off all taps and water using appliances, then check the meter after 15 minutes, if it moved, you have a leak.

WASTEWATER TREATMENT PLANT

The Wastewater Treatment facility is “permitted” by the New York State Department of Conservation to treat and discharge up to 3 million gallons per day.

City F.O.G. is a Problem

F.O.G. isn’t something that obscures vision or leaves your skin or windshield damp. It’s an acronym that stands for “fats, oils, and grease”. Here are six suggested practices for managing the reduction of F.O.G. entering liquid waste disposal systems (drains):

- Capture pan fats from cooked meat, then deposit them into solid waste receptacles.
- Scrape food remnants, like batters and frostings into solid waste.
- Dry wipe (paper towel) heavy F.O.G. from plates, cookware, and utensils before placing them in hot water for washing.
- Dispose of old food products into solid waste receptacles or recycle it though animal feed or composting programs.
- Be conservative in using fats, oils, and grease.
- For non-domestic users, a grease interception device (grease trap) should be installed and regularly maintained as part of the business.

With the cooperation of City residences and businesses, the Department of Public Works expects to minimize street overflows and home backups, and in the amount of unnecessary maintenance that is performed throughout the collection system each year.

August 2024

SUNDAY	MONDAY	TUESDAY	WEDNESDAY	THURSDAY	FRIDAY	SATURDAY
PLEASE FASTEN YOUR SEAT BELTS IT'S THE LAW				1 Garbage Zone 4 Brush & Lawn pickup Northside west of Dodge & areas above RR tracks	2	3
4	5 Garbage/Recycling Zone 1 Council Meeting 6:30PM	6 Garbage/Recycling Zone 2 Planning Commission Meeting 5:00PM	7 Garbage/Recycling Zone 3	8 Garbage/Recycling Zone 4	9	10
11	12 Garbage Zone 1 Loan Review 2:00 PM Design Review 3:30 PM Historic Preservation 5:00 PM Brush & Lawn Pickup Southside east of Pine Street	13 Garbage Zone 2 Brush & Lawn Pickup Southside west of Pine Street	14 Garbage Zone 3 Brush & Lawn pickup Northside east of Dodge below the RR tracks	15 Garbage Zone 4 Brush & Lawn pickup Northside west of Dodge & areas above RR tracks	16	17
18	19 Garbage/Recycling Zone 1	20 Garbage/Recycling Zone 1	21 Garbage/Recycling Zone 1	22 Garbage/Recycling Zone 1	23	24
25	26 Garbage Zone 1 Brush & Lawn Pickup Southside east of Pine Street	27 Garbage Zone 2 Zoning Board Appeals 5:00 PM Brush & Lawn Pickup Southside west of Pine Street	28 Garbage Zone 3 Brush & Lawn pickup Northside east of Dodge below the RR tracks	29 Garbage Zone 4 Brush & Lawn pickup Northside west of Dodge & areas above RR tracks	30	31
						For questions about City services, please call 607-962-0340

PERMITS

All outside work permits (includes water and sewer lateral repair, curb cut repair, etc.) are issued by the Public Works Department.

Sewer Permits

Sewer permits are required for all sewer work. This includes the new installation of building laterals or repairs to existing and or replacement of laterals. Sewer laterals are the responsibility of the property owner from the building to and including the connection to the main.

Water Permits

A water permit is required for all work, whether installing a new line or making a repair or replacement of an existing service line, domestic supply, or fire line. The property owner is responsible for the service line from the building served to the curb stop (usually located between the curb and sidewalk).

Private fire protection services are installed, operated, maintained, and when necessary, replaced by the owners at owners' expense from the water main to the building.

Street Opening Permits

Whenever it becomes necessary for anyone other than the municipality to excavate in a City-owned street or right-of-way, a street opening permit is required. There is no fee for the permit but a refundable deposit of \$200 is required. If the work is satisfactory, the deposit will be refunded after 12 months. The deposit may be used to offset any costs to the City to correct defective work if:

- During the 12-month period following completion of the project the excavation fails;
- It is found not to have been installed up to City specifications; and
- The owner fails to correct the deficiencies

Curb Cut/Driveway/Stair Permit

To cut the curb, to install a driveway, and/or to construct a set of stairs from the street to the owner's property, a permit must first be obtained from the Department of Public Works.

WATER LATERAL OWNERSHIP/RESPONSIBILITY

The following describes for the most part the ownership/responsibility of water connections. The City owns and is responsible for the mains in the street and the service line to the water shut-off normally located between the curb and sidewalk. The property owner is responsible for the maintenance and repair of the service line from the shut-off to the water meter. The water meter is owned by the City; however, the owner of the property is responsible for any meter damage repair (i.e. damage from freezing, physical abuse, tampering, etc.). Questions regarding ownership should be directed to the Department of Public Works.

SEWER OWNERSHIP/RESPONSIBILITY

The following describes the ownership/responsibility of building sewer connections. The City owns and is responsible only for the sewer main beneath the street and not for any building sewers (laterals) whether or not they are located in the public right-of-way. Questions regarding ownership should be directed to the Department of Public Works.

POLICY ... PROPERTY OWNER'S SEWER TROUBLE/COMPLAINT CALLS

Any party who has a sewer problem, such as blockage, slow drainage, broken line, etc., shall be responsible to first contact a local plumber of their choice to investigate the problem. The property owner shall call a plumber first, not the City. The property owner is responsible for all costs and repairs associated with the resolution of any problem that occurs on their privately-owned sewers.

If the plumber determines that the trouble is in the municipal sewer system, that which is maintained and operated by the City, then the plumber should contact the City's Department of Public Works is who will investigate and make a determination as to responsibility. If the determination is made by City personnel that the problem is the responsibility of the City, the plumber's costs for the complaint shall be paid for by the City.

September 2024

SUNDAY	MONDAY	TUESDAY	WEDNESDAY	THURSDAY	FRIDAY	SATURDAY
1	2 LABOR DAY CITY HALL CLOSED	3 Garbage/Recycling Zone 1 Planning Commission Meeting 5:00PM Council Meeting 6:30PM	4 Garbage/Recycling Zone 2	5 Garbage/Recycling Zone 3	6 Garbage/Recycling Zone 4	7
8	9 Garbage Zone 1 Loan Review 2:00 PM Design Review 3:30 PM Historic Preservation 5:00 PM Brush & Lawn Pickup Southside east of Pine Street	10 Garbage Zone 2 Brush & Lawn Pickup Southside west of Pine Street	11 Garbage Zone 3 Brush & Lawn pickup Northside east of Dodge below the RR tracks	12 Garbage Zone 4 Brush & Lawn pickup Northside west of Dodge & areas above RR tracks	13	14
15	16 Garbage/Recycling Zone 1	17 Garbage/Recycling Zone 2	18 Garbage/Recycling Zone 3	19 Garbage/Recycling Zone 4	20	21
22	23 Garbage Zone 1 Brush & Lawn Pickup Southside east of Pine Street	24 Garbage Zone 2 Zoning Board Appeals 5:00 PM Brush & Lawn Pickup Southside west of Pine Street	25 Garbage Zone 3 Brush & Lawn pickup Northside east of Dodge below the RR tracks	26 Garbage Zone 4 Brush & Lawn pickup Northside west of Dodge & areas above RR tracks	27	28
29	30 Garbage/Recycling Zone 1					For questions about City services, please call 607-962-0340

LEAF COLLECTION, SIDEWALKS, PLANNING

ANNUAL FALL LEAF COLLECTION

Public Works crews pick up loose leaves beginning in late October. Leaves will also be picked up in clear plastic bags during the Fall Pickup only. This bagged leaf pick-up will continue until December. Clear plastic bags are necessary to protect the leaves from the elements (wind, freezing rain and snow) during collection.

Although the City's Annual Leaf Collection transpires in the Fall, leaves will be collected in the spring if mixed with yard waste and placed in open top containers.

If you have questions regarding pick-up times, call Public Works at 962-0340.

In order to ensure loose leaves are collected, leaves must be placed behind the curb by 6:00 a.m. on the Monday morning of the deadline.

Leaves are to be placed between the curb and sidewalk. DO NOT rake leaves into the street. Keep storm water drains and fire hydrants free of leaves.

Do not mix brush and other debris with loose leaves. These items plug the machine or may cause mechanical failure resulting in delays to the pick-up schedule. If you have organic yard waste (leaves, grass, limbs, etc.) for disposal and wish to take this material to the City's site, the site will be open seasonally on Saturdays. During the months the site is open, the hours are from 10 AM to 2 PM on Saturdays.

The City's site is located off High Street Extension. Take Rt. 414 towards Watkins Glen, turn right, across from Winfield Street, then turn left off High Street Extension.

PLANNING & ECONOMIC DEVELOPMENT

The responsibility of the Department of Planning & Economic Development is to assist the Planning Commission in promoting high quality and orderly development; to effectively coordinate the review of development proposals with other City departments and involved State agencies; to seek, obtain and administer grant funds for community and economic development activities; and respond to citizen inquiries.

Available through the Planning & Economic Development Department are the following programs:

1. Revolving Loan Fund: A low interest loan for new or expanding business.
2. Rental Rehabilitation Fund: A low interest loan for use in improving rental properties.
3. Commercial Building Fund: A low interest loan for use in improving commercial facades, upgrading store interiors, and bringing commercial buildings up to code.
4. Water & Sewer Fund: A no interest loan available to residents whose water and/or sewer service lines are in need of repair.

SIDEWALK RESPONSIBILITY

According to the City Code, "The owner of lands fronting or abutting on any street, highway, traveled road, public lane, alley or square, shall make, maintain and repair the sidewalk adjoining his or her lands and shall keep such sidewalk and gutter free and clear of dirt, debris, leaves, snow, ice and all other obstructions. Such owner shall be liable for any injury or damage by reason of omission, failure or negligence to make, maintain or repair such sidewalks."

Although the City does not have resources to inspect sidewalks on a routine basis, we do respond to complaints reported by the public. To report a complaint, please call the Public Works Department at 962-0340.

October 2024

SUNDAY	MONDAY	TUESDAY	WEDNESDAY	THURSDAY	FRIDAY	SATURDAY
<p><u>Warning!</u> <u>Drivers should be ALERT</u> <u>for Children</u> <u>Playing in leaf piles.</u> <i>Parents should not allow children to play In or around leaf piles along curbside</i></p>	<p>Do not Rake Leaves into the Roadway</p>	<p>1 Garbage/Recycling Zone 2</p> <p>Planning Commission Meeting 5:00 PM</p>	<p>2 Garbage/Recycling Zone 3</p>	<p>3 Garbage/Recycling Zone 4</p>	<p>4</p>	<p>5</p>
<p>6</p>	<p>7 Garbage Zone 1</p> <p>Council Meeting 6:30 PM</p>	<p>8 Garbage Zone 2</p>	<p>9 Garbage Zone 3</p>	<p>10 Garbage Zone 4</p>	<p>11</p>	<p>12</p> <p>Yard Waste Site (Rt. 414) 10:00 am-2:00pm</p>
<p>13</p>	<p>14</p> <p>Columbus Day Observed City Hall Closed</p>	<p>15 Garbage/Recycling Zone 1</p> <p>Loan Review 2:00 PM Design Review 3:30 PM Historic Preservation 5:00 PM</p>	<p>16 Garage/Recycling Zone 2</p>	<p>17 Garbage/Recycling Zone 3</p>	<p>18 Garbage/Recycling Zone 4</p>	<p>19</p> <p>Yard Waste Site (Rt. 414) 10:00 am-2:00pm</p>
<p>20</p>	<p>21 Garbage Zone 1</p>	<p>22 Garbage Zone 2</p> <p>Zoning Board Appeals 5:00 PM</p>	<p>23 Garbage Zone 3</p>	<p>24 Garbage Zone 4</p>	<p>25</p>	<p>26</p> <p>Yard Waste Site (Rt. 414) 10:00 am-2:00pm</p>
<p>27</p>	<p>28 Garbage/Recycling Zone 1</p> <p>Loose Leaf Pickup Starts</p>	<p>29 Garbage/Recycling Zone 2</p>	<p>30 Garbage/Recycling Zone 3</p>	<p>31 Garbage/Recycling Zone 4</p>	<p>Do not Rake Leaves into the Roadway</p>	<p>Loose leaf pickup begins October 28 Deadline for raking loose leaves curbside is 6:00am on November 18</p>

FLOOD PROTECTION 1

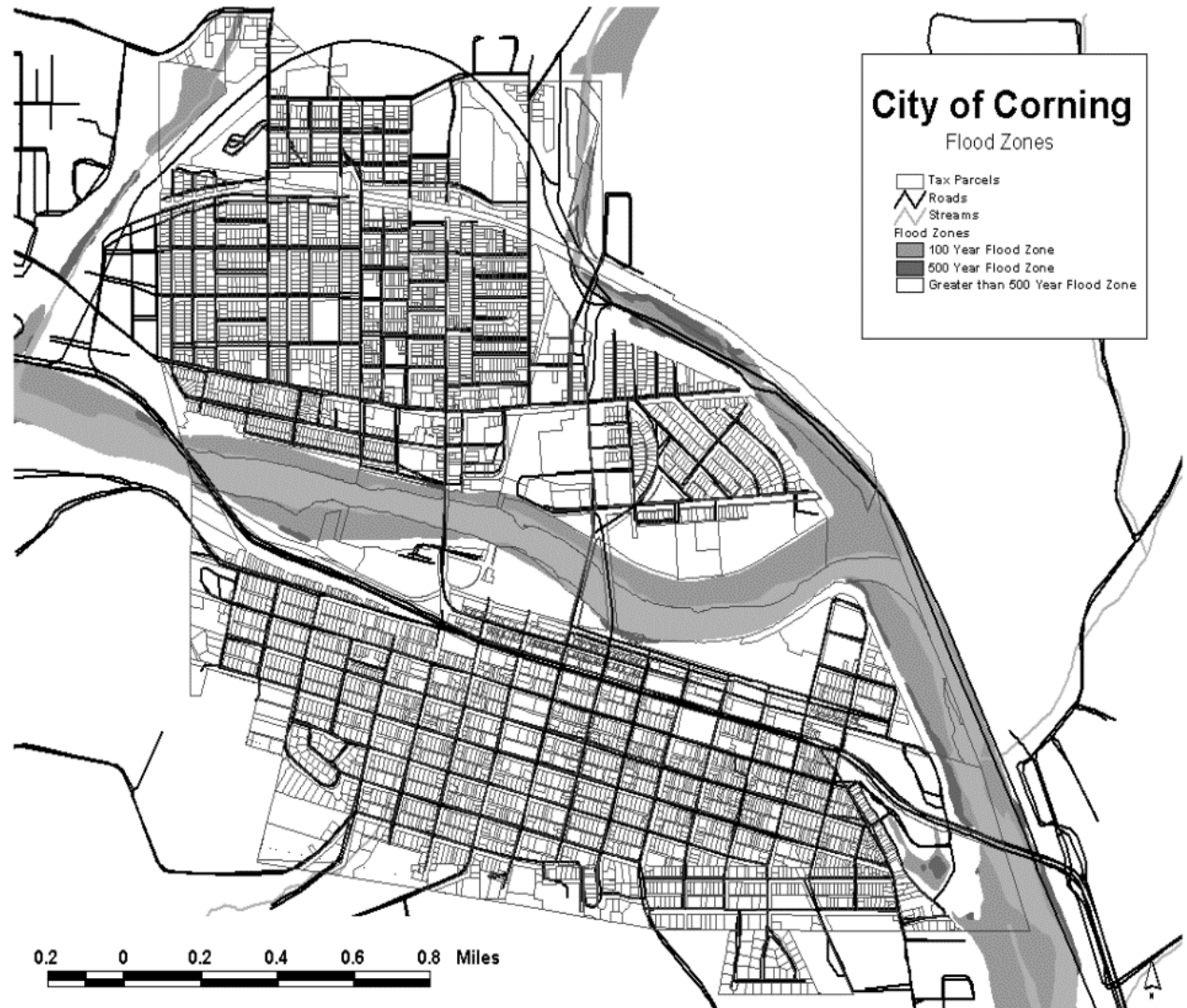
THE FLOOD WARNING SYSTEM

Through the aid of computers, maps, rain and river gauges the Flood Warning Service is able to gather and interpret critical information and data from the watershed and to prepare and evaluate river forecasts cooperatively with the National Weather Service. They report their prediction to the Emergency Management Offices (EMO) in Chemung and Steuben Counties. The EMO's will issue river stage warnings to all radio and TV stations in our area for your information. It is imperative that you heed these warnings and the necessary precautions.

Be Alert and Be Prepared

The City of Corning includes areas designated as the 100-year and 500-year floodplain. Within the 100-year floodplain you can expect a 25% chance that you will be flooded once in 30 years.

The official Flood Insurance Rate Map (FIRM) for the City of Corning is available at the City Code Enforcement Office. This Federal Emergency Management Agency (FEMA) map can help you determine the location of your home in relationship to the 100-year floodplain. Additional areas outside of the 100-year floodplain may also be at risk of flooding.



November 2024						
SUNDAY	MONDAY	TUESDAY	WEDNESDAY	THURSDAY	FRIDAY	SATURDAY
<p>For questions about City services, please call 607-962-0340</p>			<p>PLEASE OBSERVE ALTERNATE SIDE-OF-STREET PARKING REGULATIONS</p>		1	2 Yard Waste Site (Rt. 414) 10:00 am-2:00pm
3	4 Garbage Zone 1 Council Meeting 6:30 PM	5 Garbage Zone 2 Planning Commission Meeting 5:00 PM	6 Garbage Zone 3	7 Garbage Zone 4	8	9 Yard Waste Site (Rt. 414) 10:00 am-2:00pm
10	11 Veteran's Day observed City Hall Closed	12 Garbage/Recycling Zone 1 Loan Review 2:00 PM Design Review 3:30 PM Historic Preservation 5:00 PM Deadline for raking loose leaves to curb is 6:00am	13 Garbage/Recycling Zone 2	14 Garbage/Recycling Zone 3	15 Garbage/Recycling Zone 4	16
17	18 Garbage Zone 1	19 Garbage Zone 2	20 Garbage Zone 3	21 Garbage Zone 4	22	23 Last day for Yard Waste Site (Rt. 414) 10:00 am-2:00pm
24	25 Garbage/Recycling Zone 1 Bagged Leaf Pickup Starts	26 Garbage/Recycling Zone 2 Zoning Board Appeals 5:00 PM	27 Garbage/Recycling Zone 3	28 Thanksgiving City Hall Closed	29 Garbage/Recycling Zone 4 Day After Thanksgiving City Hall Closed	30

FLOOD PROTECTION 2

EVACUATION TIPS

If you live near a small stream, an additional hazard from flash flooding may be present should severe local storms or winter ice jams occur. Flash floods may occur with little or no warning. You must be prepared to evacuate quickly.

- Tune in to radio and television stations for evacuation procedures. Follow directions of emergency personnel directing you out of the area. Do not delay.
- Turn off water, gas, and electricity at shut-off points. Never touch the switch while you are wet or standing in water.
- Open basement windows to let water in to equalize pressure.
- Move important or expensive items (such as washers, dryers, etc.) to a higher floor.
- Put small appliances in plastic bags and store in a high place.
- Lock your doors when you leave.
- Try to provide for pets and farm animals.

To permanently flood proof your home, elevate or relocate washers/dryers, furnaces, water heaters, etc. Basement drains & backwater valves can be installed, and floodwalls can be placed around utilities.

FLOODPLAIN DEVELOPMENT AND PROTECTION

All development in a floodplain (not just construction of buildings) require local permits. Before you build or buy in a floodplain, contact the Code Enforcement Officer for more details. In addition, please contact these officials if you see illegal development in the flood plain.

When a stream loses its carrying capacity as a result of dumping, sedimentation and debris, flooding occurs more frequently. Contact the Code Enforcement Office to report violations.

FLOOD INSURANCE

In 1968, Congress created the National Flood Insurance Program (NFIP). This program provides flood insurance at a reasonable cost in exchange for the careful management of flood prone areas by local communities. Your community participates in the NFIP; you can protect your home and contents through NFIP.

You do not have to live in the floodplain to qualify. Property owners can insure buildings and contents; renters can insure their possessions. Since homeowner policies do not cover losses due to flooding, we urge you to contact your own insurance agent and find out more about flood insurance under the National Flood Insurance Program.

FLOOD CONTACTS

Federal Emergency
Management Agency
(FEMA)
26 Federal Plaza Room 1337
New York, New York 10278

(800) 638-6620
(212) 225-7208



Regional Flood Control Office
100 North Main Street
Elmira, New York 14901
(607) 732-2214



Steuben County
Emergency Management
Office
Steuben County Office Building
3 East Pulteney Square
Bath, New York 14810
(607) 664-2700

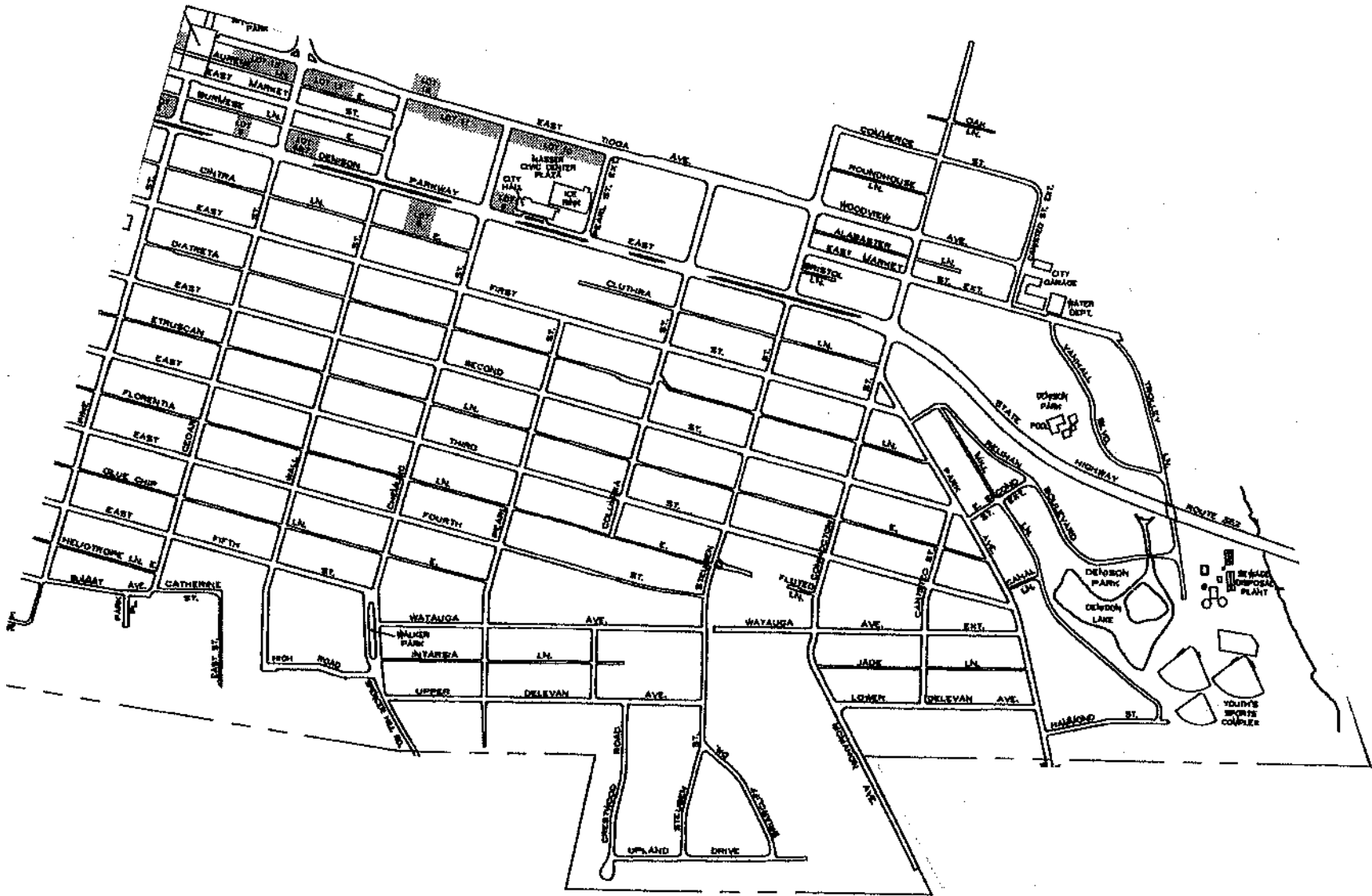


City of Corning
Code Enforcement Office
500 Civic Center Plaza
Corning, New York 14830
(607) 962-0340

December 2024

SUNDAY	MONDAY	TUESDAY	WEDNESDAY	THURSDAY	FRIDAY	SATURDAY
1	2 Garbage Zone 1 Council Meeting 6:30PM	3 Garbage Zone 2 Planning Commission Meeting 5:00PM	4 Garbage Zone 3	5 Garbage Zone 4	6	7
8	9 Garbage/Recycling Zone 1 Loan Review 2:00 PM Design Review 3:30 PM Historic Preservation 5:00 PM	10 Garbage/Recycling Zone 2	11 Garbage/Recycling Zone 3	12 Garbage/Recycling Zone 4	13	14
15	16 Garbage Zone 1	17 Garbage Zone 2	18 Garbage Zone 3	19 Garbage Zone 4	20 Last Day of Bagged Leaf Pickup	21
22	23 Garbage/Recycling Zone 1	24 Garbage/Recycling Zone 2 Zoning Board Appeals 5:00 PM	25 Christmas City Hall Closed	26 Garbage/Recycling Zone 3	27 Garbage/Recycling Zone 4	28
29	30 Garbage Zone 1	31 Garbage Zone 2				Please clear your sidewalks and avoid shoveling snow into the streets.

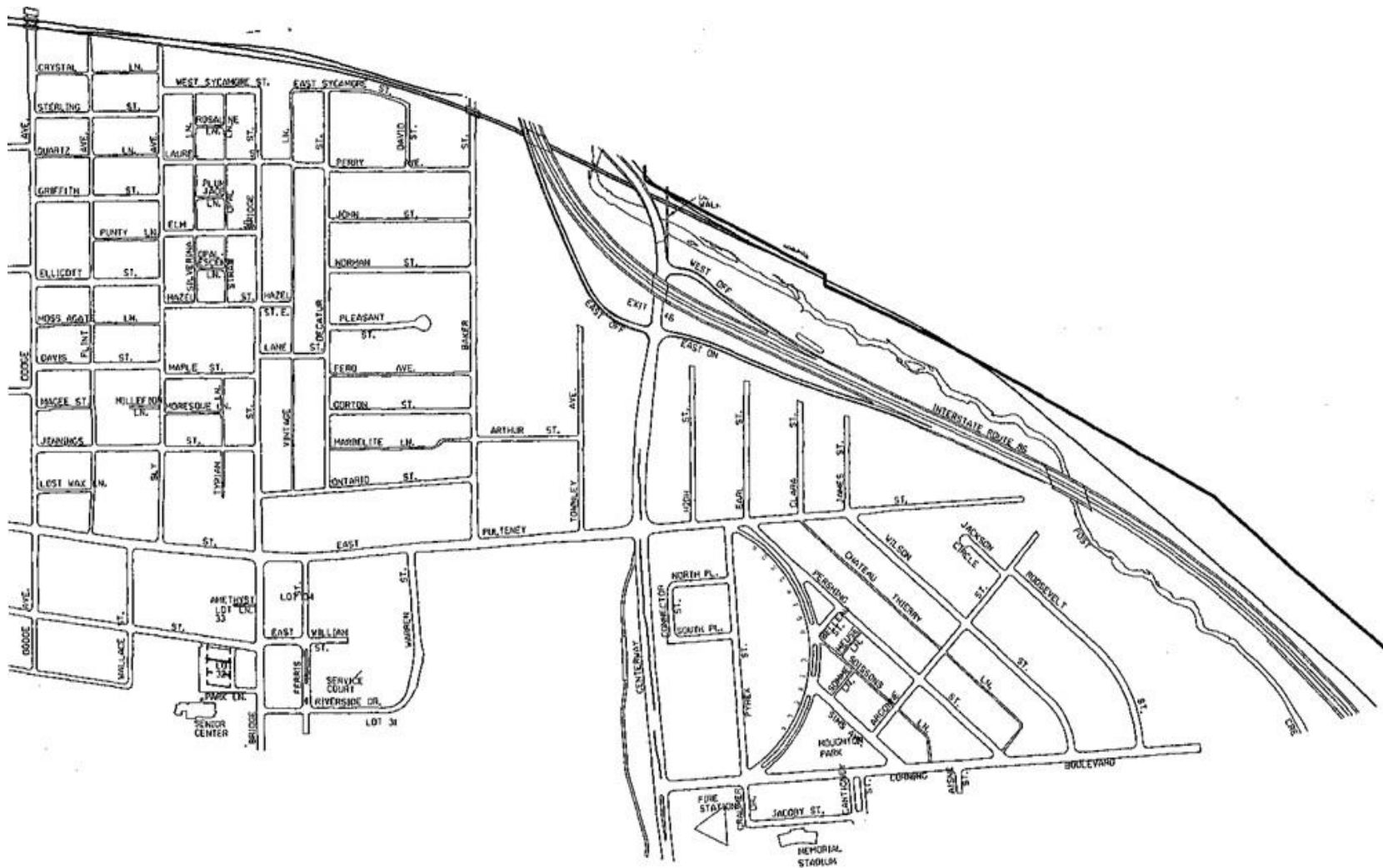
ZONE 1



ZONE 2



ZONE 3



ZONE 4

